

**PREQUALIFICATION FOR MECHANICAL,**  
**ELECTRICAL, PLUMBING (MEP)**  
**Design and Installation for Building Services.**  
**(Health care, Residential, Commercial,**  
**Industrial and Institutional Complexes)**

Contact: +91 9597476532

+91 9496135382

Email:

avaiarasu@hotmail.com

info@rrenc.in

Address:

83, Karthik nagar,

Saravanampatti,

Coimbatore-641035

India.

[www.rrenc.in](http://www.rrenc.in)

❖ Civil ❖ Mechanical ❖ Electrical ❖ Instrumentation ❖ Plumbing & Drainage

❖ Engineering ❖ Procurement ❖ Construction ❖ Project Management Consultancy  
❖ Pre & Post Contract Quantity Survey ❖ Claim and Contract Administration  
❖ 2D and BIM Engineering Drawing Production ❖ MEP Engineer Training

## **About Us**

R R Engineering and Construction Coimbatore - India, established in 2014 as an extension of R R Consultancy FZC, Ajman, UAE.

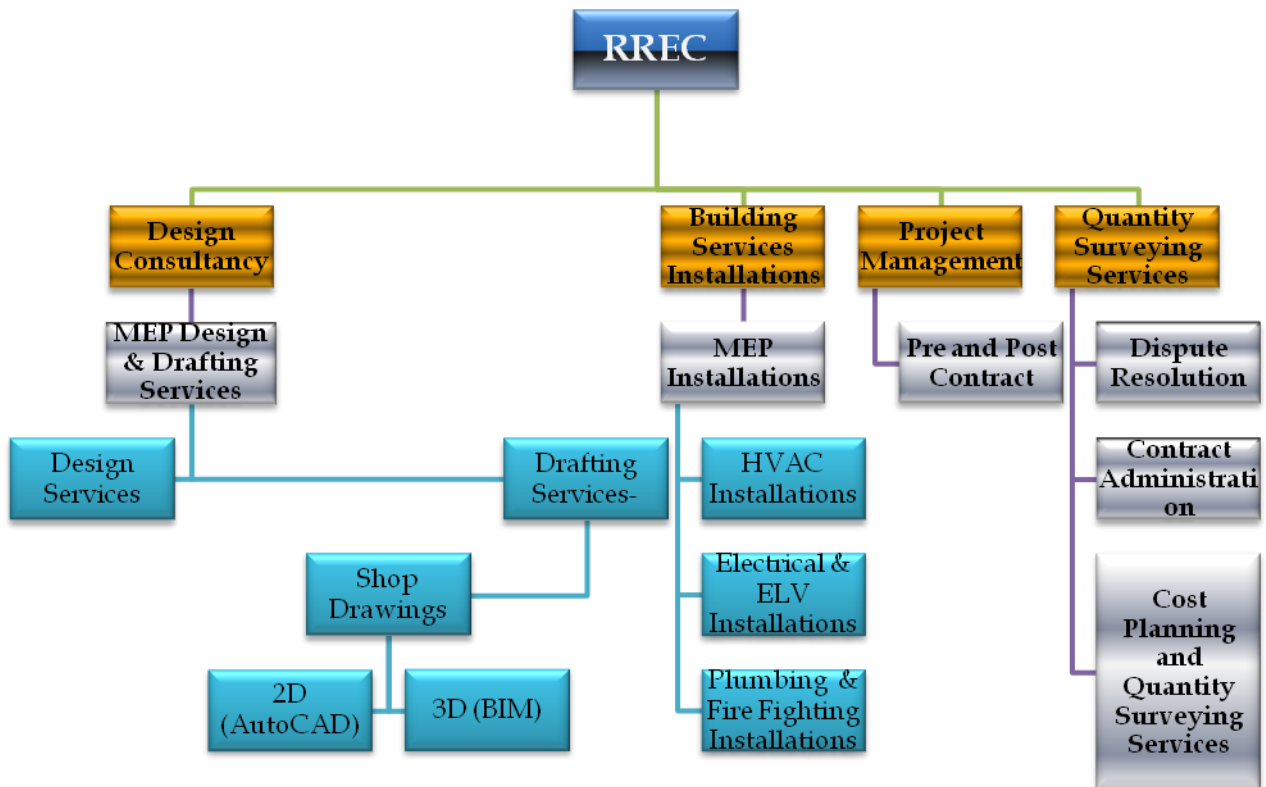
We undertake detailed Engineering and Design of Civil and MEP Construction and specialize in Third Party Testing & Commissioning activities.

It also undertakes the complete Turnkey Projects of Civil and MEP (HVAC, Fire Protection & Detection, Electrical ELV and Plumbing and Drainage Services)

We have proven expertise in Quantity Surveying services, pre and post contract administration, Project Management and Claims related services.

❖ **Civil** ❖ **Mechanical** ❖ **Electrical** ❖ **Instrumentation** ❖ **Plumbing & Drainage**

❖ Engineering ❖ Procurement ❖ Construction ❖ Project Management Consultancy  
❖ Pre & Post Contract Quantity Survey ❖ Claim and Contract Administration  
❖ 2D and BIM Engineering Drawing Production ❖ MEP Engineer Training



❖ Civil ❖ Mechanical ❖ Electrical ❖ Instrumentation ❖ Plumbing & Drainage

- ❖ Engineering ❖ Procurement ❖ Construction ❖ Project Management Consultancy
- ❖ Pre & Post Contract Quantity Survey ❖ Claim and Contract Administration
- ❖ 2D and BIM Engineering Drawing Production ❖ MEP Engineer Training

## **Activities**

Our main activities encompass the complete Design, supply, installation, testing, commissioning and maintenance of the entire Civil, MEP System.

- The above can be elaborated as under:

### **Mechanical:**

- Boilers ,Chillers , Heat Exchangers and Cooling Towers
- HVAC Ducting, Chilled water Piping
- Fresh air Fans & Smoke Extraction Systems
- Chilled water Pumps, Air Handling Equipment, Air distribution and Terminals.
- Fire Fighting system including wet and Dry risers, Hose reel system.

### **Electrical and ELV:**

- Substations and LV Switchgear
- Primary & Secondary Power, Mains, Panels, Switch Gear and Equipment
- Cabling Systems, Switching Devices, Signal Boosters
- Lighting and Small Power
- Emergency Stand-by Generators, Control Panel
- IT / Data, Communications, and Conduit, Trunking & Duct Work
- Fire Detection and Alarm Systems
- Building Grounding & Lightning Arrestor Systems
- Security Intercom Systems, Central Public Address and Audio System
- Building Management Systems,

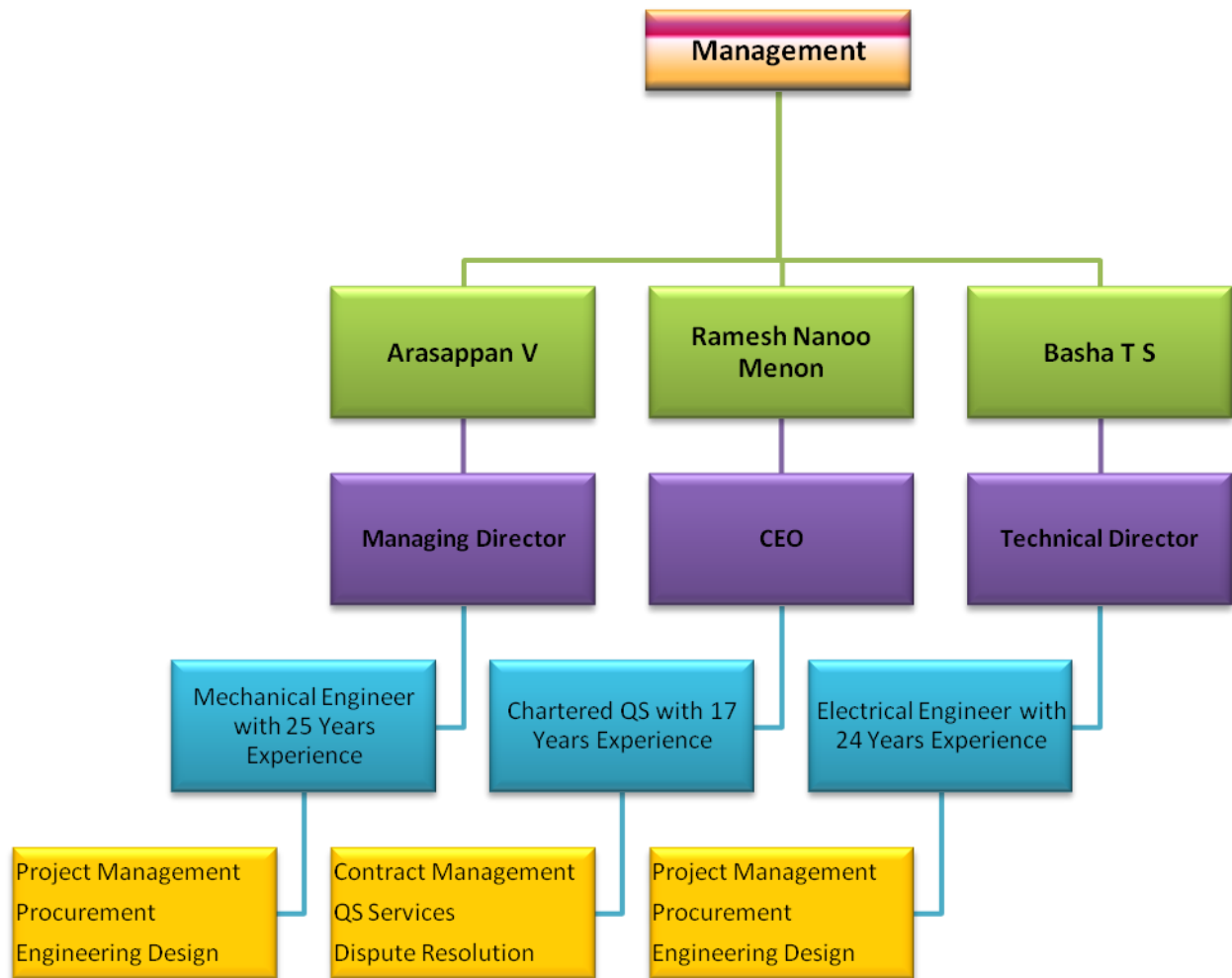
### **Plumbing and Drainage**

- Potable water & Fire Water Storage Systems
- Sanitary & Storm Drainage Systems

❖ **Civil**   ❖ **Mechanical**   ❖ **Electrical**   ❖ **Instrumentation**   ❖ **Plumbing & Drainage**

❖ Engineering   ❖ Procurement   ❖ Construction   ❖ Project Management Consultancy  
 ❖ Pre & Post Contract Quantity Survey   ❖ Claim and Contract Administration  
 ❖ 2D and BIM Engineering Drawing Production   ❖ MEP Engineer Training

## Organization Chart:



❖ **Civil** ❖ **Mechanical** ❖ **Electrical** ❖ **Instrumentation** ❖ **Plumbing & Drainage**

- ❖ Engineering ❖ Procurement ❖ Construction ❖ Project Management Consultancy
- ❖ Pre & Post Contract Quantity Survey ❖ Claim and Contract Administration
- ❖ 2D and BIM Engineering Drawing Production ❖ MEP Engineer Training

## Key Personnel CV

### Ramesh Nanoo Menon

#### Chief Executive Officer

Over seventeen years experience predominantly within the construction industry involving pre and post contract commercial and contractual management of prominent construction projects in UAE and Qatar.

Significant experience and expertise in the field of MEP Works with in depth knowledge in tendering, preparation of Bill of Quantities, contract review, risk avoidance and management, pricing strategy and negotiation for Pre-Contract Works. Also deeply involved in post contract administration, change order preparation and management, claims preparation and management and preparation and negotiation of Final Accounts with Contractor and Employer.

Particular skills include: pre-contract works including preparation of detailed Bill of Quantities and other Tender requirements, contract administration; change order preparation and management, claims, specialising in resolution of disputes related to MEP Works.

#### Experience

#### Building Services

Dubai Mall, Dubai (MEP Works) – From Tender to Close out (2004-2013)

- Initially part of the Bidding team for Pre-Contract works. Involved in the preparation and review of Subcontract Documents, pricing and Tender Submission to Employer.
- After the award of the Subcontract, appointed as the Head of the Commercial team for the MEP Subcontract Joint Venture involved in contract administration, variation and claims preparation and negotiation. Full remeasurement of MEP drawings (around 25,000) for change orders and claims.
  - Involved in the preparation and negotiation of the final account of the world's biggest shopping Mall with the Main Contractor. Negotiation of settlement Agreement for Final Account US \$ 300 Million.

❖ **Civil** ❖ **Mechanical** ❖ **Electrical** ❖ **Instrumentation** ❖ **Plumbing & Drainage**

- ❖ Engineering ❖ Procurement ❖ Construction ❖ Project Management Consultancy
- ❖ Pre & Post Contract Quantity Survey ❖ Claim and Contract Administration
- ❖ 2D and BIM Engineering Drawing Production ❖ MEP Engineer Training



#### Key Facts

Specialist MEP Quantity Surveyor  
Tendering and Estimating  
Contract Administration  
Mediation & Dispute Resolution

#### Education and Qualifications

B E (Mechanical Engineering)  
MSc Quantity Surveying

#### Memberships and Associations

The Royal Institution of Chartered Surveyors; Member (MRICS)

#### Technical Competencies

Tendering  
Quantity Surveying & BOQ  
Contract Administration  
Claims

#### Building Industry Sectors

MEP Works  
Interior Fit out  
Aluminium and Glass

#### Entertainment Centre, Dubai (MEP Works)

- Involved in the preparation, defence and negotiation of the MEP Subcontract Final Account. Final Account US \$ 35 Million.

#### Twin Hotel Towers, Dubai

- Aluminium and Glass Package - Involved in the preparation and defence of variations and negotiation of Final Account with Main Contractor and Employer for the tallest Hotels in the World. Contract value US \$ 55 Million.
- Interior Fit Out Works – Involved in successfully renegotiating the subcontract package owing to the suspension of a portion of the subcontract works. Also involved in contract administration and change order management. Contract value US \$ 40 Million.

#### Hotel renovation Project, Qatar

- Involved in the preparation and review of Subcontract Documents and subsequent Tender Submission to the Contractor for a cost-plus Subcontract.
- After the award of the Subcontract, Head of the Commercial team for the MEP Subcontractor involved in contract administration and cost management. Contract Value US \$ 166 Million.

#### Palace, Qatar

- Initially part of the Bidding team for Pre-Contract works. Involved in the preparation and review of Subcontract Documents, pricing and Tender Submission to Employer.
- After the award of the Subcontract, Head of the Commercial team for the MEP Subcontractor involved in contract administration, variation and claims preparation and negotiation. Contract Value US \$ 7 Million.

#### Tram (MEP Works)

- Involved in the contract administration and claims process. Contract value US \$ 12 Million.

❖ **Civil**   ❖ **Mechanical**   ❖ **Electrical**   ❖ **Instrumentation**   ❖ **Plumbing & Drainage**

❖ Engineering   ❖ Procurement   ❖ Construction   ❖ Project Management Consultancy  
 ❖ Pre & Post Contract Quantity Survey   ❖ Claim and Contract Administration  
 ❖ 2D and BIM Engineering Drawing Production   ❖ MEP Engineer Training

## Arasappan V

### Managing Director

A dynamic professional with over 25 years of rich overseas & indigenous experience in handling overall activities of turnkey projects encompassing planning, scheduling, co-coordinating and progress monitoring for all types of MEP Systems in accordance with national / international quality standards.

Domain expertise in Healthcare, Oil & Gas, Petrochemicals, Power, Residential, Commercial, Industrial Complexes and Metro Projects encompassing installation, testing and commissioning of MEP System with BMS.

Adept at managing design engineering operations of MEP Systems involving detailed designs & development, developing detailed drawing, co-ordination with internal departments (QA/QC, etc.), material submittals, process developments, interfacing with consultants and customer for technical queries, obtain approval of Material Submittal and drawings, etc.

Strong relationship management, communication skills with ability to network with Project Members / External Agencies for obtaining MEP clearances / MEP Consultants / Clients / Vendors / Project Site Engineers / MEP Contractors / Architects with consummate ease for framing design parameters/technical & commercial specifications.

An effective communicator with demonstrated ease at allocating resources, training and working along with teams of Site Engineers, Supervisors and Technicians during the project till final delivery.

### Key Responsibilities

- Attending project kick- off and review meetings with clients / Consultants.
- Managing the entire gamut of all personnel related activities within Engineering, Procurement and Construction areas including manpower forecasting, staff assignments and performance reviews.
- Designing and preparing shop drawings, material submittals for Mechanical (HVAC System, Fire Fighting) Electrical and Plumbing, Drainage Services as per site requirements and specifications with International Codes. (ASHRAE- SMACNA – ASME - ANSI- NFPA- NEC, CIBSE).



### Key Facts

MEP (EPIC)  
Engineering and Design  
Project Management  
Testing & Commissioning

### Education and Qualifications

M.E (Thermal Engineering)  
AMIE (Mechanical Engineering)  
D.R.A.C.E

### Memberships and Associations

ASHRAE – American Society of Heating Refrigerating and Air-conditioning Engineers Inc.  
ISTE - Indian Society for Technical Education.

### Building Industry Sectors

Healthcare, Oil & Gas, Petrochemicals, Power, Residential, Commercial, Industrial Complexes and Metro Projects

### Experience

United Arab Emirates  
Oman  
Qatar  
Iran  
India

❖ Civil ❖ Mechanical ❖ Electrical ❖ Instrumentation ❖ Plumbing & Drainage

- ❖ Engineering ❖ Procurement ❖ Construction ❖ Project Management Consultancy
- ❖ Pre & Post Contract Quantity Survey ❖ Claim and Contract Administration
- ❖ 2D and BIM Engineering Drawing Production ❖ MEP Engineer Training





Engineering & Construction

- Executing the installation & testing commissioning of – MEP System (HVAC System, BMS, Boiler, PHEX, Electrical, Plumbing, Drainage as well as the Fire Protection Services. - Chillers, Pumps, Cooling Tower, CHW Piping Networks, Air handling units, R.O Plant and Sewerages Treatment Plant and associated works)
- Manage P&L and balance sheet performance
- Develop and operationalize strategies, long-range plans, annual operating plans, annual budgets
- Develop strategic plan to advance companies objectives and to promote revenue and profitability within or any potential expansion.
- Conduct all financial reviews and demonstrate the most appropriate cost efficiency in all business functions and issue the reporting on weekly / monthly basis as the case may be.
- Act as a navigator and a visionary to build and lead a team of dynamic and innovative professionals. Attract and develop talent pool and organization efficiency.
- Create strong team spirit. Ensure business processes, tools, and internal controls to support operations.
- Strategic Management (Planning, Financial, Analysis, Business development) project management and in developing project plans, coordinate projects, communicate changes and progress, complete projects in time and budget, manage project team activities.
- Maintaining standards of safety as well as ensuring compliance with company's Health, Safety and Environment Management System requirements.

### **Training**

- Neyveli Lignite Corporation, India; May 4, 1992 – June 5, 1992. Attended advanced technical training in the field of Direct Fired Vapour Absorption Chillers, Heaters, Boilers, Steam Turbines and Cooling Towers on various topics: Information and Explanation, Inspection and Troubleshooting, Installation and Maintenance.
- Advanced First Aid Course Training by SHELL.
- H2S Awareness and Escape
  - Enhanced Site Supervision.
- STOP – Trained By DuPont.

❖ **Civil**   ❖ **Mechanical**   ❖ **Electrical**   ❖ **Instrumentation**   ❖ **Plumbing & Drainage**

❖ Engineering   ❖ Procurement   ❖ Construction   ❖ Project Management Consultancy  
❖ Pre & Post Contract Quantity Survey   ❖ Claim and Contract Administration  
❖ 2D and BIM Engineering Drawing Production   ❖ MEP Engineer Training

## **Experience-Building Services – Project Management**

- Dubai Metro Project (Red and Green Line) Dubai Rapid Link Consortium (DURL) Japan Turkey Metro Joint Venture (Rashidiya, Jebel Ali and Al-Qusais Depots)

The MEP Value of the Project: US \$ 140 Million.

- Intercon staff accommodation at Dubai Silicon Oasis - High rise Building – B+G+ 9

The MEP Value of the Project: US \$ 30 Million.

- IKEA – Yas Island – Abudhabi- UAE.

The MEP Value of the Project: US \$ 40 Million.

- IKEA – Doha – Qatar

The MEP Value of the Project: US \$ 50 Million.

- Heritage Houses – Doha land

The MEP Value of the Project: US \$ 40 Million.

- Burj Marina com 08 – B+G+ 40 – High Rise Tower – at Lusail City, Qatar.

The MEP Value of the Project: US \$ 50 Million.

- Gold Factory at DMCC - for Damas – Dubai – UAE

The MEP Value of the Project: US \$ 35 Million.

- 2B+G+ 9 Residential Building at Al Barsha – Dubai – UAE

The MEP Value of the Project: US \$ 30 Million.

- 2B+G+7 Furnished Garden Apartments – Nakheel – Dubai .UAE.

The MEP Value of the Project: US \$ 150 Million.

- B+G+4 Design House for leading architect in Dubai – UAE.

The MEP Value of the Project: US \$ 30 Million.

- Factory extension in Ducab at Jebel Ali – Dubai – UAE

The MEP Value of the Project: US \$ 20 Million.

## **❖ Civil ❖ Mechanical ❖ Electrical ❖ Instrumentation ❖ Plumbing & Drainage**

- |   |               |                |                                     |
|---|---------------|----------------|-------------------------------------|
| ❖ Engineering                               | ❖ Procurement | ❖ Construction | ❖ Project Management Consultancy    |
| ❖ Pre & Post Contract Quantity Survey       |               |                | ❖ Claim and Contract Administration |
| ❖ 2D and BIM Engineering Drawing Production |               |                | ❖ MEP Engineer Training             |

- Upstream and Downstream crude on shore Facilities at Dorood – IRAN  
The MEP Value of the Project: US \$ 50 Million.
- G+M+9 Residential and Commercial Building at ABUDHABI – UAE  
The MEP Value of the Project: US \$ 91 Million.
- LNG – Upstream Production Facilities for PDO at North Oman.  
The MEP Value of the Project: US \$ 45 Million.
- 250 Bed Hospital at Rustaq – Batinah Region – OMAN.  
The MEP Value of the Project: US \$ 100 Million.
- 410 Bed Hospital at Sohar – OMAN.  
The MEP Value of the Project: US \$ 125 Million.
- International Airports Authority of India – Chennai – India.  
The MEP Value of the Project: US \$ 25 Million.

❖ **Civil**   ❖ **Mechanical**   ❖ **Electrical**   ❖ **Instrumentation**   ❖ **Plumbing & Drainage**

- |   |               |                                     |                                  |
|---|---------------|-------------------------------------|----------------------------------|
| ❖ Engineering                               | ❖ Procurement | ❖ Construction                      | ❖ Project Management Consultancy |
| ❖ Pre & Post Contract Quantity Survey       |               | ❖ Claim and Contract Administration |                                  |
| ❖ 2D and BIM Engineering Drawing Production |               | ❖ MEP Engineer Training             |                                  |

**Engineering and Design Team:**

Senior Design Engineer (MEP) – 2 Nos

Design Engineer - Mechanical - 2 Nos

Design Engineer - Electrical - 2 Nos

Principal Designer – Electrical – 1No

Principal Designer – Mechanical – 2Nos

Principal Designer –Civil- 1No

Designer – Electrical – 2Nos

Designer – Mechanical – 4 Nos

Designer – Civil – 2 Nos

❖ **Civil**   ❖ **Mechanical**   ❖ **Electrical**   ❖ **Instrumentation**   ❖ **Plumbing & Drainage**

❖ Engineering   ❖ Procurement   ❖ Construction   ❖ Project Management Consultancy  
❖ Pre & Post Contract Quantity Survey   ❖ Claim and Contract Administration  
❖ 2D and BIM Engineering Drawing Production   ❖ MEP Engineer Training

### **MEP Construction Team:**

Project Engineer – Electrical – 2 Nos

Project Engineer – Mechanical – 2 nos

Electrician – 15 Nos

Pipe Fitter – 10 Nos

Plumber – 10 Nos

Skilled Helper – 20 Nos

We also employ skilled subcontractors under the supervision of our in-house staff.

❖ **Civil** ❖ **Mechanical** ❖ **Electrical** ❖ **Instrumentation** ❖ **Plumbing & Drainage**

❖ Engineering ❖ Procurement ❖ Construction ❖ Project Management Consultancy  
 ❖ Pre & Post Contract Quantity Survey ❖ Claim and Contract Administration  
 ❖ 2D and BIM Engineering Drawing Production ❖ MEP Engineer Training

## **Quality & Safety Policy**

### **QUALITY POLICY**

RREC recognizes that to maintain its leadership in the sector, Quality comes first and should be incorporated in its operations. To achieve this, the division focuses on the following:

Strive to exceed Customer Requirements by delivering high quality products and services. This is measured by conducting regular Customer Satisfaction Surveys.

To develop employee skills through training, motivation and empowerment. The company work towards achieving **Improving Employee Satisfaction**.

RREC is committed to the principles of **Total Quality Management** and continual improvement. The effectiveness of this is measured by conducting regular Internal Audits, and in Monthly and Quarterly performance Reviews. Specific Quality Objectives set by the company are regularly monitored and reviewed in these Meetings

### **SAFETY & HEALTH POLICY**

**RREC** recognises that a high standard of safety and health will contribute to an efficient organisation and its benefit in economic term is immeasurable.

We are committed to provide a conducive and healthy working environment for our employees and to ensure this, it is our policy to: -

- Take responsibility for the safety and health of our employees and the public ahead of company's commercial interest
- Provide safety and health programs that are effective in identifying and reducing hazards in the workplace as well as the job safety
- Take all action necessary to remedy any non-compliance
- Comply with all rules & regulations concerning the occupational safety and health legislation's.
- Provide comprehensive training to employees to develop work practices that efficiently produce quality product in a safe and healthy manner.
- Safety program is a responsibility requiring goal setting, proper planning, good organisation and effective control, as set up in the company's safety system. All management personnel are to be actively committed to implement the company's safety system.

### **“THERE IS NO COMPROMISE ON SAFETY & HEALTH”**

❖ **Civil** ❖ **Mechanical** ❖ **Electrical** ❖ **Instrumentation** ❖ **Plumbing & Drainage**

❖ Engineering ❖ Procurement ❖ Construction ❖ Project Management Consultancy  
 ❖ Pre & Post Contract Quantity Survey ❖ Claim and Contract Administration  
 ❖ 2D and BIM Engineering Drawing Production ❖ MEP Engineer Training

## **Projects under Execution**

### **1) Hotel Mangala International, Coimbatore**

Hotel Mangala International is the premier business class hotel in Coimbatore which is located at ram nagar, gandhipuram, one of the busiest business centers in Coimbatore making it a perfect host for business travelers and tourists.



### **Refurbishment Works**

**Electrical** – Transformer, LV Panels, MDB, SMDB, DB Installation and testing commissioning.

**ELV Services** – Fire Alarm, CCTV, Car park Management, access control, Evacuation voice control and Central Battery System, Installation and testing commissioning.

**Plumbing and Drainage** – The Piping network from Bore well to the RCC Water tank and Distribution to all Points .The Drainage networks from the Sanitary Fitting to the Holding tank and soak pit and corporation chamber, Installation and testing commissioning .

❖ **Civil**   ❖ **Mechanical**   ❖ **Electrical**   ❖ **Instrumentation**   ❖ **Plumbing & Drainage**

❖ Engineering   ❖ Procurement   ❖ Construction   ❖ Project Management Consultancy  
 ❖ Pre & Post Contract Quantity Survey   ❖ Claim and Contract Administration  
 ❖ 2D and BIM Engineering Drawing Production   ❖ MEP Engineer Training

## Projects completed

### 1. G + 2 Residential Building at Saravanampatti, Sathy Road, Coimbatore



**Electrical** – MDB, SMDB, DB Installation, testing and commissioning of power and control wiring up to switches and sockets, Installation and testing commissioning.

**ELV-** CCTV and access Control works from Containment, Installation and testing and Commissioning.

**Plumbing and Drainage** – The Piping network from Bore well to the RCC Water tank and Distribution to all Points .The Drainage networks from the Sanitary Fitting to the Holding tank and soak pit and corporation chamber, Installation and testing commissioning .



❖ Civil ❖ Mechanical ❖ Electrical ❖ Instrumentation ❖ Plumbing & Drainage

❖ Engineering ❖ Procurement ❖ Construction ❖ Project Management Consultancy  
 ❖ Pre & Post Contract Quantity Survey ❖ Claim and Contract Administration  
 ❖ 2D and BIM Engineering Drawing Production ❖ MEP Engineer Training



## 2. G + 4 Building at Saravanam Patti, Sathy road, Coimbatore



**Electrical** – MDB, SMDB, DB Installation, testing and commissioning of power and control wiring up to switches and sockets, Installation and testing commissioning.

**ELV-** CCTV and access Control works from Containment, Installation and testing and Commissioning.

**Plumbing and Drainage** – The Piping network from Bore well to the RCC Water tank and Distribution to all Points .The Drainage networks from the Sanitary Fitting to the Holding tank or soak pit or corporation chamber, Installation and testing commissioning .

**Fire fighting works:** From the Fire water tank/Pump room / Breaching Inlet to entire Floor or networks piping installation, testing and commissioning of Fire Fighting System.

❖ **Civil**   ❖ **Mechanical**   ❖ **Electrical**   ❖ **Instrumentation**   ❖ **Plumbing & Drainage**

❖ Engineering   ❖ Procurement   ❖ Construction   ❖ Project Management Consultancy  
 ❖ Pre & Post Contract Quantity Survey   ❖ Claim and Contract Administration  
 ❖ 2D and BIM Engineering Drawing Production   ❖ MEP Engineer Training